



IN COLLABORATION WITH UCI, UCLA, & USC

BLACK VISION CONFERENCE
Celebrating Black
Queer Lives

APRIL 6TH, 2019
SOCIAL SCIENCE PLAZA

BEING MINDFUL

As a planning committee there are sessions dedicated to providing space for Black people to talk with each other as Black people. This space, name, time, room, is a space for Black people. We realize that not everyone who identifies as Black will want to participate in that kind of space but given the statistics that we all know about the crises facing Black queer, trans, and gender non-binary people (as well as all Black people), we would be unethical if we did not create such a space and offer it for Black people to come together in the midst of this conference. Black people in California have the worst disparities on every single social index of Black people in the entire US. Black people are policed and prevented from doing political work together on these campuses, and the threat of this kind of making space as Black people together is so high that 50 years ago at UCLA on January 17, 1969 two young Black Panther Party members were killed, 23 year old John Huggins and 26 year old Alprentice "Bunchy" Carter. It is 2019 and we cannot do all the work that we need to do for ALL OF US if we don't make sure that Black people have space. Period. We trust that all people of good will, shall support us in this today.

- Dr. Tiffany Willoughby-Herard

CONSIDERATIONS FOR THOSE IN ATTENDANCE

Have an awareness of spatial dynamics.

Consider the impact of the questions you ask.

Be sure you are actively listening and learning.

Respect boundaries.

Be sure your takeaways from this conference include supporting Black queer femmes.

IMPORTANT INFORMATION

CHECK-IN/REGISTRATION: Check-in tables for the conference will be open at the following time and location:

9:00 AM - 9:45 AM, OUTSIDE OF SOCIAL SCIENCE LECTURE HALL

FOOD & REFRESHMENTS: Complimentary lunch and refreshments will be available at the following time and location:

12:00 PM - 12:50 PM, SOCIAL SCIENCE PLAZA PATIO

INTERNET ACCESS: Guests can access wifi through the network UCInet Mobile Access. No password required. Open a web browser and try to connect to any web page. You should be redirected to the Express Registration (“ExpressReg”) page where you will be guided through the registration process. Refer to the directions below.

If you are not automatically redirected, please visit the website <https://oit.uci.edu/reg> and select the “ExpressReg” option.

RESTROOMS: ‘All-Gender’, ‘Women’s’, and ‘Men’s’ Restrooms are available.

LEVEL 1: SOCIAL SCIENCE LECTURE HALL FIRST

LEVEL 2: SOCIAL SCIENCE LAB

DECOMPRESSION SPACE: There will be a space designated if you feel you need a break from the sessions. Staff will be able to direct you to that space. Since UC Irvine is hosting you, please ask staff to help accommodate your needs.

LEVEL 2: SOCIAL SCIENCE LECTURE LAB 206

IN COLLABORATION WITH UCI, UCLA, & USC

BLACK VISION CONFERENCE

Celebrating Black Queer Lives

APRIL 6TH, 2019
SOCIAL SCIENCE PLAZA

SCHEDULE OVERVIEW

9:00 AM - 10:00 AM

REGISTRATION FOR GUESTS

10:00 AM - 10:50 AM

SESSION 1

11:00 AM - 11:50 AM

SESSION 2

12:00 PM - 12:50 PM

NETWORKING LUNCH

1:00 PM - 1:50 PM

SESSION 3

2:00 PM - 3:00 PM

ARTS PERFORMANCE

3:00 PM - 5:00 PM

KEYNOTE SPEECH

9:00 AM - 10:00 AM

REGISTRATION FOR GUESTS

10:00 AM - 10:50 AM **SESSION 1**

SSL 228 **All That I Am Is Enough:** **Adrian Williams** **Womxn's Hub, UC Irvine**

The intent of this workshop is to create a space of vulnerability for attendees to talk about mental health and discuss strategies that will help them to preserve their energy and their magic. At the conclusion of this workshop, attendees will leave feeling empowered and inspired.



SSL 248 **Black Queer Resistance:** **Anthony James Williams** **Sociology, UCLA**

Black Queer Resistance centers community knowledge from workshop participants and academic research about self-care and collective-care among Black women organizers. During the course of the workshop we will explore three questions. From what legacy do we descend? How can we resist sinking into the struggle through self-care, collective-care, and quiet as forms of Black queer resistance? And finally, how do we maintain healthy practices of caring for ourselves and others?

SSL 270 **The African Diaspora:** **Jessica Young,** **Gender Studies, USC**

Few key moments in the African Diaspora from a black social movements perspective. While it is impossible to cover the entire 500-year history of movements for justice and equality, we will workshop around a few key texts that consider the effects of colonialism, segregation, and other forms of anti-blackness on blacks' quests for freedom. The workshop will consider these issues as it pertains to the United States, but we will also consider the transnational implications of diasporic social thought and praxis on race, gender and sexuality.



SSL 228
Afro-heritage
Ariel Hart & Jennifer Uribe
Sociology, UCLA

What would a healthy Black Queer Future look like? What does our vision require us to work on healing right now? In this workshop, we will vision collectively to identify the ways we can extend ancestral work of healing cycles of trauma through self, and community care. We will consider what has and hasn't worked, sharing ideas and resources for transformational healing and sustainability for the body, material conditions and community circumstances.

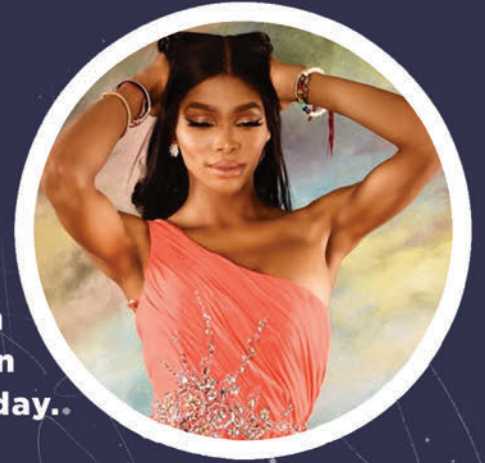


SSL 290
Dorothy Was Telling The Truth:
Finding Purpose Over The Rainbow
Grayson Bell, Author

Gray Ndiaye is a modern-day Griot who resides in Southern California. This presentation will focus on the importance of mental health in our community and how to discover hope in the midst of struggling.

**SSL 270
Trans Visibility
Miliana Singh
LGBT Center OC**

The experience of being black and brown while trans. Get the first hand experience of someone who has navigated spaces and places as a mixed black and brown person while dealing with their identity as a trans woman and what that currently means in the world we live in today.



12:00 PM - 12:50 PM LUNCH

Social Science Plaza Patio

1:00 PM - 1:50 PM SESSION 3



**SSL 228
The Cultural Impact of Black Queer
Media in America: Then & Now**

Jayce Baron

KISS & TELL NETWORKS

Take a look back at the history of QPOC in media and how it has curved the mindset of America's outlook on marginalized LGBTQ+ communities today.



SSL 248
Politics of Black Love:
Elizabeth Rogers
CARE, UCLA

In this discussion-based workshop, attendants will explore the concepts of love, politics, and relationships as they intersects with blackness and queerness. We won't just talk about what love means but we will talk about how to channel these theories into material change on our campuses and communities.



SSL 270
How To Support Communities &
People Of Difference:
Sir & Lovemore
@BlackTransTV

This workshop will help attendees become more familiar with ways to care for and to respect communities and people of difference. Participants will gain a common understanding of what it means to do the work to maintain respect, advocate for safer spaces, engage with people who may not align within the binary & more.



2:00 PM - 3:00 PM **ARTS PERFORMANCE**

SSLH 100

Decolonizing Self-Care

Amber Love Gordon & Semaj Garbutt

The term “self-care” has become a buzzword and is taking on definitions that are influenced by the colonizers of the world. The purpose of this mini-workshop/discussion will be to re-imagine and explore what it means to practice self-care as folx who must constantly navigate oppressive spaces. There will also be a discussion on the usefulness of expressive arts as a form of self-care, reclamation of power, and resiliency building.



Spoken Word Performance By: Porsha Olayiwola

Porsha Olayiwola is the 2014 Individual World Poetry Slam Champion and 2015 National Poetry Slam Champion. Black, poet, queer-dyke, hip-hop feminist, womanist: Porsha is a native of Chicago who now resides in Boston where she organizes, writes and teaches. Her goal is to maintain a cipher of self that is uncontrollable, undocumented and just plain ole dope.



3:00 PM - 5:00 PM **KEYNOTE SPEECH**

SSLH 100

Keynote Speech will be led by Ericka Hart



IN COLLABORATION WITH

**The Black Vision Conference would like to thank
the following for contributing to this project:**

UC IRVINE STUDENT AFFAIRS

UC IRVINE LGBT CENTER

UCI WOMEN'S CENTER

UCI CENTER FOR BLACK CULTURES.

RESOURCES & RESEARCH

UC IRVINE AFRICAN AMERICAN STUDIES

USC RACE AND EQUITY CENTER

ASUCI

USC QUASA

UCLA CARE PROGRAM

USAC EVP

USAC CULTURAL AFFAIRS COMMISSION

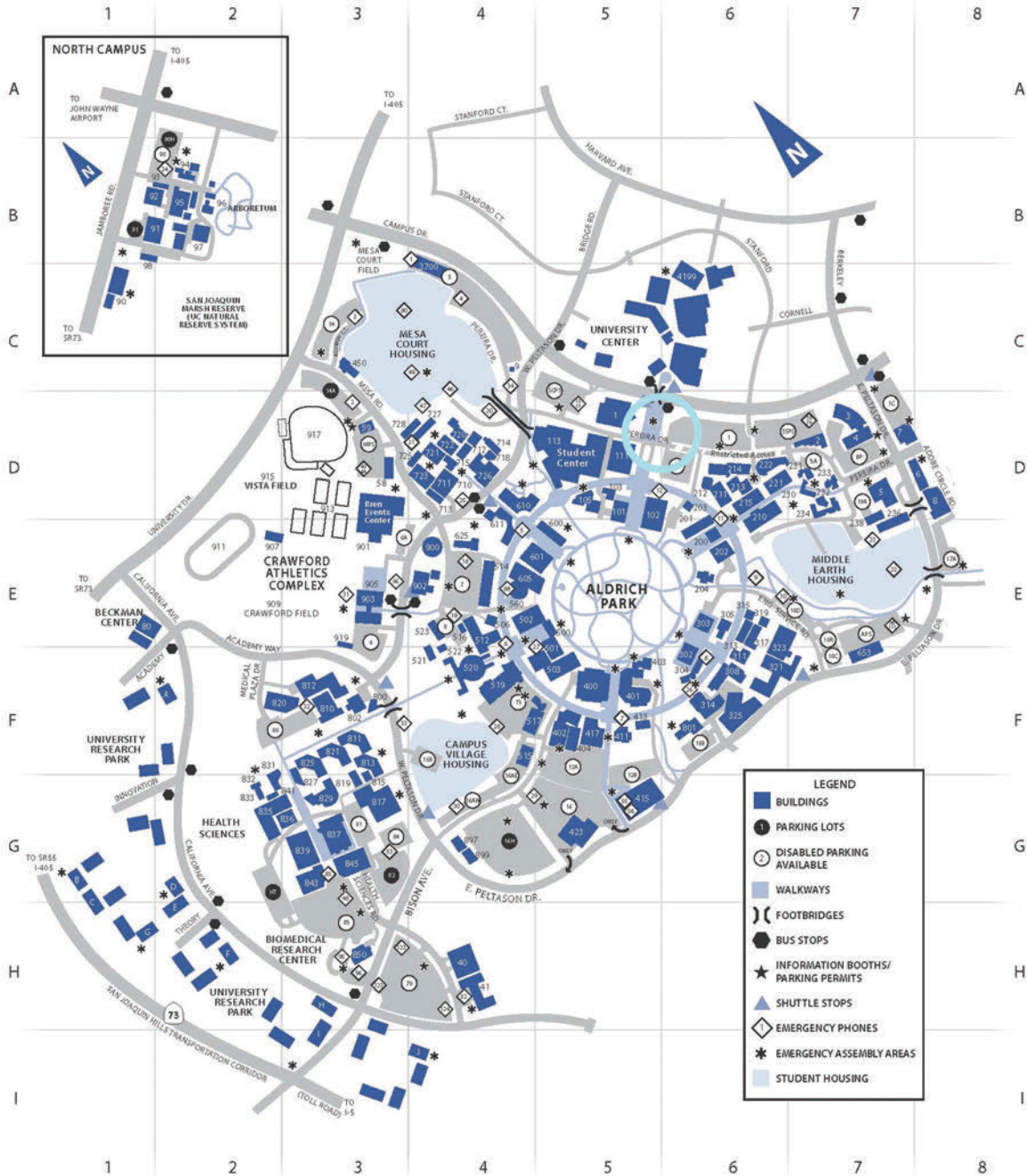
USAC ACADEMIC AFFAIRS COMMISSION

UCLA BLAQUE

CAMPUS MAP



UCI Campus Core



| LEGEND | |
|--------|--|
| | BUILDINGS |
| | PARKING LOTS |
| | DISABLED PARKING AVAILABLE |
| | WALKWAYS |
| | FOOTBRIDGES |
| | BUS STOPS |
| | INFORMATION BOOTHS/ PARKING PERMITS |
| | SHUTTLE STOPS |
| | EMERGENCY PHONES |
| | EMERGENCY ASSEMBLY AREAS |
| | STUDENT HOUSING |

IN COLLABORATION WITH

 **Student Affairs**

UCI Lesbian, Gay, Bisexual
Transgender Resource Center

UCI WOMEN'S
HUB

UCI Center for Black Cultures,
Resources & Research

UCI African American Studies
School of Humanities

USC Race and Equity Center

UCLA CARE Program

